

Programming With JMRI

Back Up Your Locomotive!

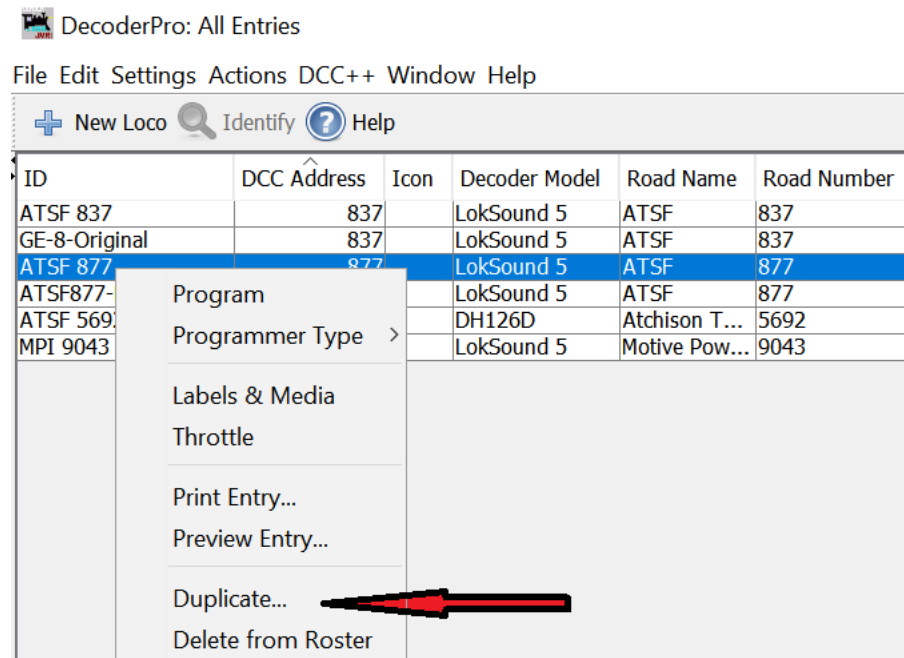
Before we do any work on a locomotive decoder, we must make a backup of the original file. We do this so that if there are programming mistakes that we can't recover from, we can go back to the original settings.

Open Decoder Pro.

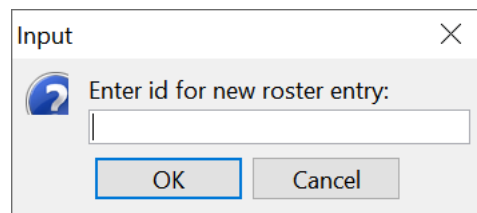
Locate the locomotive you wish to consist.

Select the locomotive and right click.

Click Duplicate.



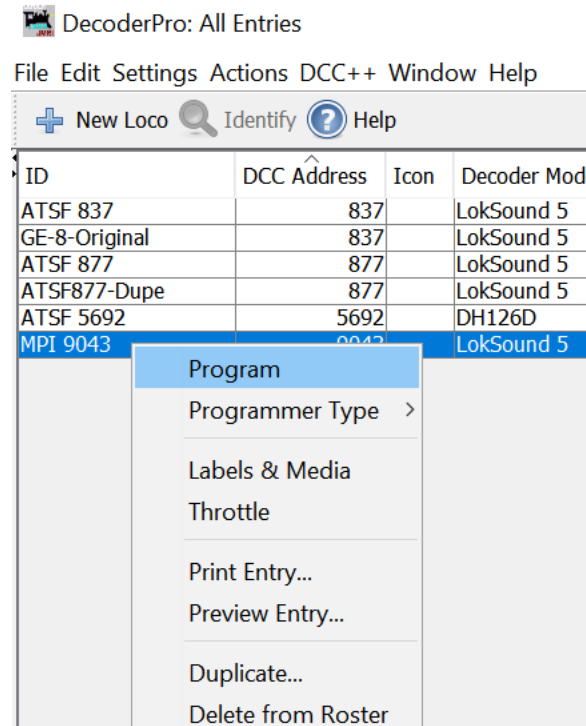
Enter a name for the locomotive.



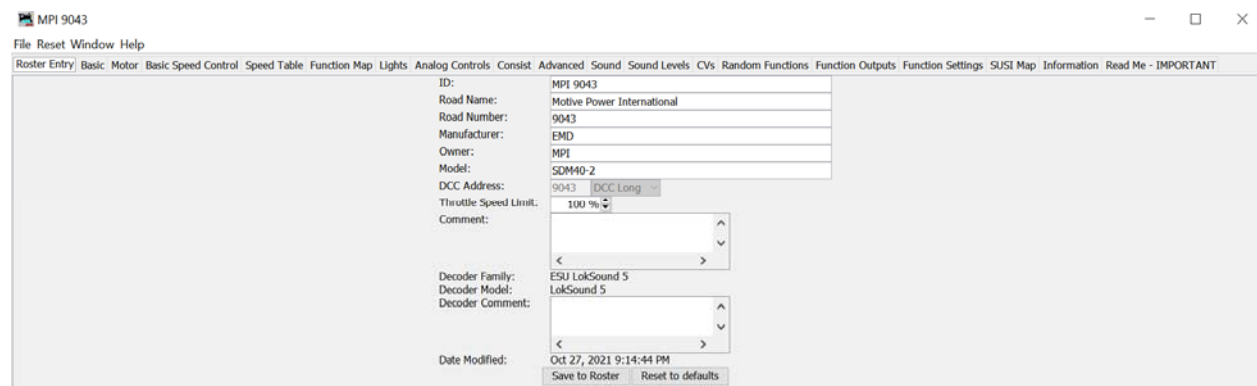
Example: MPI 9043-Master

Program Your Locomotive

Now that we have backed up our locomotive, we can begin the programming work. Open Decoder Pro and select the locomotive you wish to program. Right click the locomotive and select "Program"



Wait. This will take a moment to load. Once loaded, you will see the main programming screen.



From this screen, you can navigate to various programming features for your decoder. Depending on the decoder you have installed or that came with your locomotive, you will be presented with different options.

If you are programming on the club roster, be sure to verify that the locomotive you have selected is correct. The loco name is in the upper left corner. Also be sure that you aren't modifying the master copy in case you need to roll back changes!